

IXL Professional Learning Opportunities



Maximize IXL's impact with the help of our professional learning experts! Our engaging PD experiences, flexible delivery options, and customizable packages will help you achieve your goals from the district to the classroom.



ON-SITE EXPERIENCES

IXL Live: School Edition

Bring the [IXL Live](#) experience teachers are raving about to your school! This package includes a personalized 4.5 hour session on IXL implementation strategies, plus 1.5 hours of guided teacher planning time.

Flex On-Site

Our 2-hour flex sessions deliver practical IXL strategies for daily instruction. Opt for one or more sessions on the same day, based on your schedule and needs. Optional, complimentary 60-minute session for district and site leaders included.

SCHOOL SUCCESS PACKAGE

This highly flexible, custom package includes both on-site and virtual professional development sessions. We'll give you and your teachers the tools you need to confidently implement IXL into your daily instruction and achieve your goals.

This package includes:

- Planning call
- One day of on-site professional development
- Two follow-up virtual sessions
- Data review





VIRTUAL OFFERINGS

Whether you're a new or seasoned IXL customer, virtual PD is a convenient way to help your school get the most out of IXL.

VIRTUAL PACKAGES

Starter PD Package

Learn everything you need for getting started on IXL and plan for an effective implementation.

This package includes:

PD planning call (optional): Your IXL Professional Learning Specialist will learn more about your implementation goals to personalize your PD sessions.

Foundations I (math and ELA only) – Essential tools for daily instruction: Best practices for using IXL's comprehensive curriculum, instructional resources, and first-of-its-kind assessment suite to support daily instruction.

Foundations II – Strategies for data-driven classrooms: Deep dive into IXL's adaptive curriculum, classroom engagement tools, and up-to-the-minute Analytics. Emphasis on practical strategies for using data to support students.



**MOST POPULAR VIRTUAL PACKAGE****Power-up PD Package**

This highly customizable package is designed to give you the most personalized support so that you can reach and exceed your implementation goals. Collaborate with an experienced IXL Professional Learning Specialist to create a tailored PD plan based on research-proven best practices and strategies, empowering you to maximize IXL's impact in your school.

This package includes:

- Planning call
- Three 60-minute virtual sessions

Express PD Package (for up to 50 attendees)

The Express PD Package is specially crafted to fit into your meeting or prep schedule while providing your teachers with personalized support and effective instructional strategies. An IXL Professional Learning Specialist will work with you to create a PD path that fits your busy schedule.

This package includes:

- Planning call
- 60-minute virtual session
- Three 30-minute sessions

*For groups up to 200 attendees, try our **Express Package for Districts**.

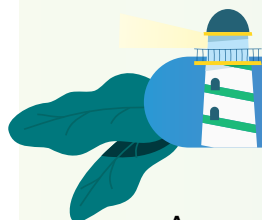
This package includes six 30-minute sessions.

VIRTUAL SESSIONS

We offer a variety of virtual sessions that can be added to a package or purchased separately. These sessions are designed to support your implementation goals and fit into your schedule.

Session topics can include:

- Essential tools for daily instruction
- Strategies for personalized and data-driven instruction
- Using IXL for science, social studies, or Spanish
- Using IXL in high school or early elementary
- Assessment deep dive
- IXL for school leaders
- ...and more!



DISTRICT SUCCESS PACKAGES

As your partner, we'll set you up for a successful district-wide implementation with training and consultations, all tailored to your goals and instructional vision. We offer four different packages to support districts of any size.

Packages can include:

- Custom implementation plan
- On-site and virtual professional development sessions
- Strategy session for site leaders
- Scope and sequence alignment
- Quarterly data reviews
- ...and more!

CONTACT US FOR MORE DETAILS AND PRICING

ABOUT IXL'S PROFESSIONAL LEARNING TEAM

IXL's PD team merges K-12 instructional experience with IXL implementation expertise. Our team of former educators has decades of combined experience in a diverse range of specialties, including intervention, special education, blended learning, competency-based education, data-driven instruction, and curriculum development.

To learn more about IXL professional learning, contact us at pd@ixl.com.

www.ixl.com | 855-255-8800

